



MONTHLY MEMBERSHIP PROGRESS REPORT

District 201Q2

Results as of: 02/28/2018

GMT: ANN ELDRIDGE

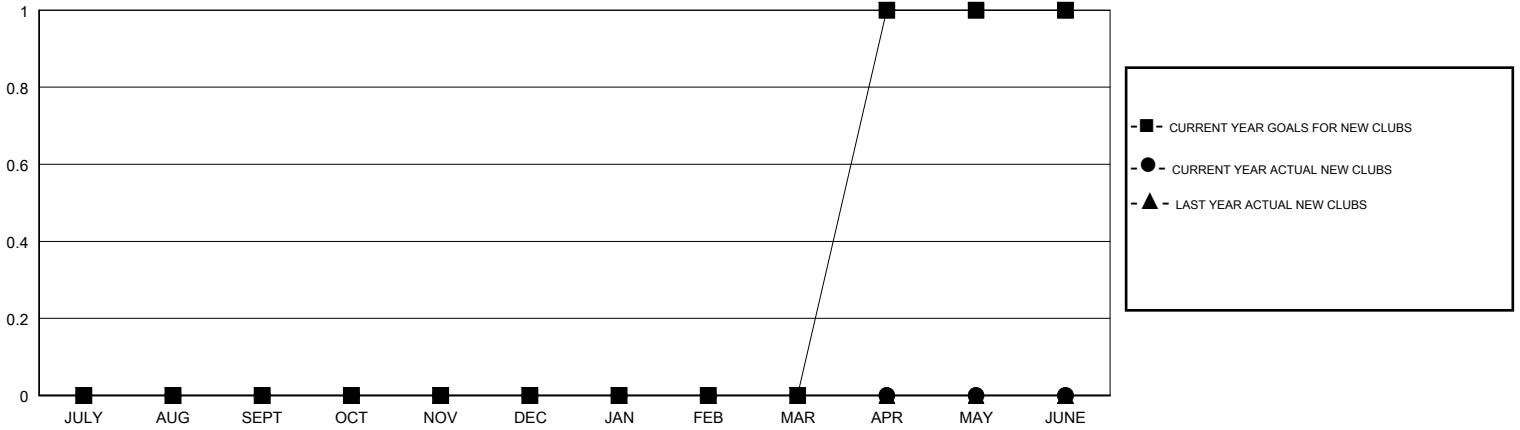
LOCATION AUSTRALIA

GMT CA

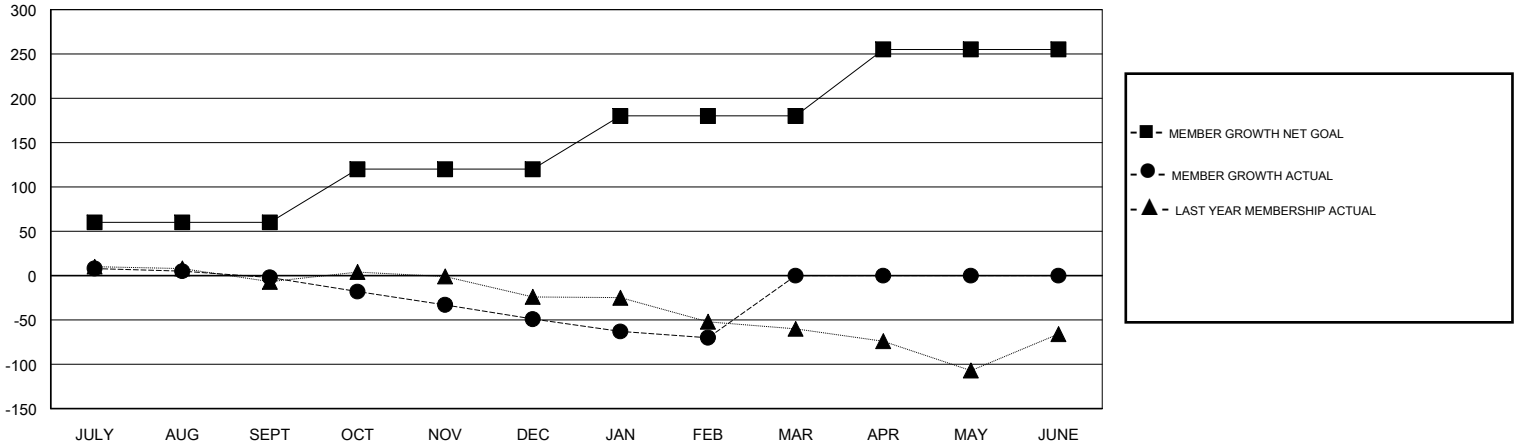
| Clubs | | | |
|-----------------------|---------------|-----------|---------------|
| RESULTS FOR 2017-2018 | | | |
| QUARTER | NEW CLUB GOAL | NEW CLUBS | DROPPED CLUBS |
| JULY/AUG/SEPT | 0 | 0 | 0 |
| OCT/NOV/DEC | 0 | 0 | 1 |
| JAN/FEB/MAR | 0 | 0 | 2 |
| APR/MAY/JUNE | 1 | 0 | 0 |

| Members | | | |
|-----------------------|------------------------|----------------------|--|
| RESULTS FOR 2017-2018 | | | |
| QUARTER | MEMBER GROWTH NET GOAL | MEMBER GROWTH ACTUAL | DROPPED MEMBERS ACTUAL (including transfers) |
| JULY/AUG/SEPT | 60 | 33 | 31 |
| OCT/NOV/DEC | 60 | 21 | 62 |
| JAN/FEB/MAR | 60 | 16 | 36 |
| APR/MAY/JUNE | 75 | 0 | 0 |

GOALS AND ACTUAL NEW CLUBS CUMULATIVE



GOALS AND ACTUAL MEMBERS CUMULATIVE



| | | | |
|------------------|--|--|--------------|
| DROPPED CLUBS: 3 | 23 CLUBS OF 66 ADDED 1 OR MORE NEW MEMBERS | <u>GENDER DISTRIBUTION</u> | |
| DROPPED MEMBERS | | MALE | 707 (61.91%) |
| DECEASED | 12 | FEMALE | 435 (38.09%) |
| CLUB CANCELLED | 6 | Women Percentage Fiscal Year Goal: 40% | |
| OTHER | 111 | TOTAL FAMILY UNIT MEMBERS 180 | |
| TOTAL | 129 | | |

[CLICK HERE FOR CUMULATIVE MEMBERSHIP DATA](#)